



NEXT INDIA

Engineering The Future

COMPANY PROFILE



Transportation & Logistics | Overhauling | O & M

OUR STRENGTH



EXPERTISE

End-to-end Engineering & Construction Solutions



QUALITY

Committed to Safety, Quality & Excellence



RELIABILITY

Strong Foundations. Stronger Relationships.

POWERING PROJECTS. BUILDING TOMORROW.



EXCAVATION



DUMP TRUCK



BACKHOE LOADER



WHEEL LOADER

OUR SERVICES



CIVIL CONSTRUCTION



INDUSTRIAL PROJECTS



INFRASTRUCTURE DEVELOPMENT



PROJECT MANAGEMENT



EQUIPMENT & TRANSPORT SOLUTIONS



+91 97520 18888
+91 97559 33507



www.next-india.com



Shop No. 07 B, Vikas Complex
Power House Road, Korba
Chhattisgarh - 459677

About Us



Established in 2025, **NEXT INDIA** has rapidly emerged as one of the leading transportation and infrastructure service providers in India. Built on a strong foundation of skilled manpower, technical expertise, and credibility, the company delivers reliable and high-quality services across the Civil, Mechanical, Electrical, and Power sectors.

We specialize in a wide range of operations including coal transportation, ash removal, excavation, and other civil works, along with Annual Operation & Maintenance (O&M) contracts, capital overhauling, and complete erection, testing, and commissioning of power plants up to 800 MW. Our strong association with major public and private sector organizations reflects our commitment to excellence and trust.

With a robust fleet of over 120 machines—including trailers, tippers, dumpers, excavators, and loaders—supported by well-trained operators, drivers, and skilled workforce, we are fully equipped to handle large-scale and time-critical projects efficiently.

Our team comprises highly qualified engineers, experienced professionals, and dedicated project experts who ensure seamless execution and timely delivery. We focus on achieving optimum productivity while maintaining the highest standards of quality, safety, and environmental responsibility. Our services extend beyond execution to include after-sales support and troubleshooting, ensuring minimal downtime and maximum operational efficiency.

At NEXT INDIA, safety is a core value. We strictly adhere to safety protocols across all our sites and offices to protect our manpower, equipment, and work environment. Continuous training and career development programs are provided to our team to enhance performance and maintain industry-leading standards.

Driven by innovation, reliability, and customer satisfaction, NEXT INDIA continues to build long-term partnerships and deliver excellence in every project we undertake.

VISION



"Our vision is to establish ourselves as a **pioneer in India's infrastructure and transportation landscape**, setting new benchmarks for excellence through the delivery of **innovative, efficient, and reliable solutions**. We are committed to bridging distances and building the foundations of a modern nation by integrating cutting-edge technology with sustainable practices. By prioritizing operational integrity and client-centric value, we aim to not only lead the market but also to empower the communities we serve, ensuring a seamless and connected future for all."

MISSION

- ✓ To ensure customer satisfaction through quality services.
- ✓ To ensure zero-harm operations through stringent HSE practices.
- ✓ To build long-term partnerships with power utilities and industrial clients.
- ✓ To continuously enhance workforce skills through training and development.

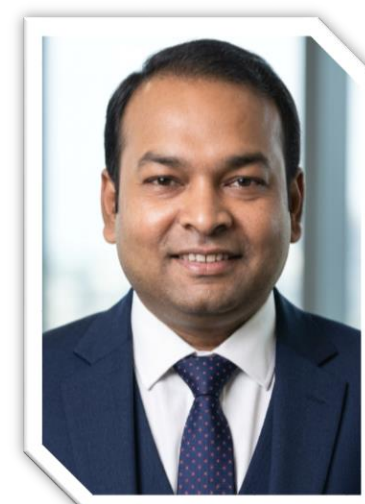
Our



Core Members



MANTOSH KUMAR
PARTNER
9755933507



DEEPAK KUMAR JAISWAL
PARTNER
9752018888

Projects & BD



ALOK BANAFER
Head of Department
9752797810

O & M



VIKRAM P SINGH
Head of Department
7894104001

Transportation & Logistics



ROSHAN JAISWAL
Head of Department
9111150001

HR & Administration



AWINASH RANTAI
Head of Department
9827186456

Planning & Commercial



HARSH KUMAR
Manager
8810243856



SATISH TIWARI
Business Associate

HR & Administration



SURYA VAISHNAV
Manager
7000373215

Our Services & Project Experience



We are committed to delivering **reliable, safe, and cost-efficient transportation solutions, Erection, Fabrication, Maintenance & Operation** ensuring uninterrupted supply chain operations for our valued clients in the power, cement, steel, and infrastructure sectors.



Transportation Coal, Ash & Materials

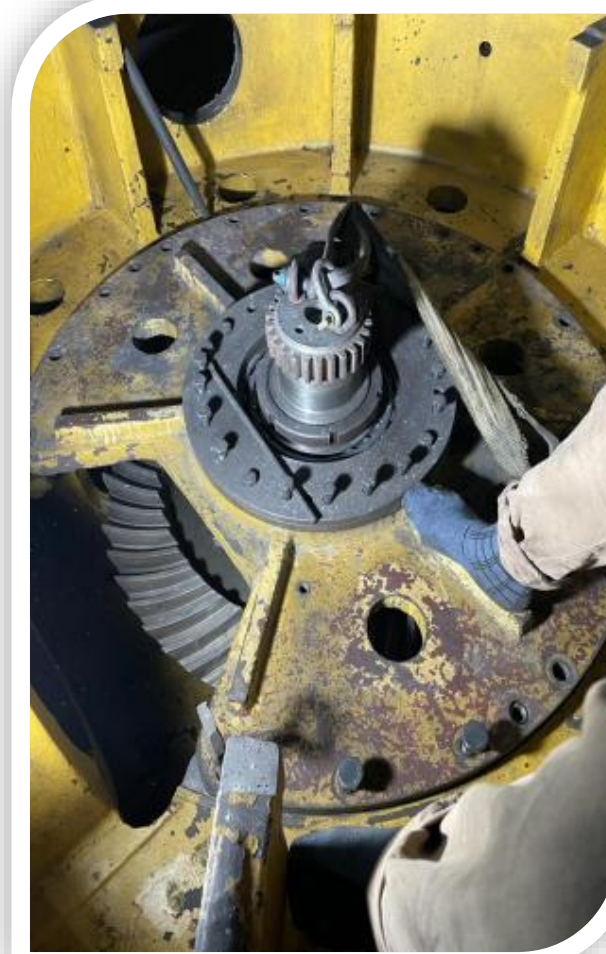
Our company specializes in providing efficient, safe, and reliable transportation services for Coal and other bulk materials across various industrial sectors. With a strong fleet network and experienced manpower, we ensure timely and cost-effective logistics solutions tailored to client requirements. We are actively engaged in coal transportation from mines to power plants, stockyards, and industrial units, along with handling of ash, overburden, construction materials, and other bulk commodities. Our operations are supported by modern tracking systems, well-maintained vehicles, and strict adherence to safety and environmental regulations. like –

- Coal transportation from mine to plant and stockyard
- Bulk material handling and logistics support
- Ash removal and overburden transportation services
- End-to-end supply chain management by highly skilled operators
- GPS-enabled fleet monitoring for real-time tracking Compliance with safety, mining, and environmental standards
- Timely delivery with optimized route planning

Shutdown and Overhauling

Renovation and Overhauling of all Pressure and Rotary parts of Power plants as well as repair-modification and rehabilitation for :

- Boilers and Auxiliaries
- HP/LP piping
- Generator, Turbine and Auxiliaries
- HT/LT Motors
- Coal Mill and accessories
- Ducting & AHP
- Coal Handling Plant
- Repair, Replacement of ESP component.



Operation and Maintenance Services

Operation & Maintenance Contract is to our customers at a cost that helps keep their plant in proper working condition by providing as reasonably necessary all man and machine and professional, supervisory and managerial personnel as are required to perform the Services. Our Scope and work arena

Mechanical : Boiler TG & Mill, Coal Mill, APH, TG, CHP, Motor, ESP Pressure Parts . AUX. , BOP, System Of Ash Handling System. Drain To Rench Pipe Work, Rym OF XRP-803 MILLS & ITS Components , RYM Of Boiler Maintenance.

Electrical : ESP, Transformers , LT Switch Gear, LT Blowers, HT / LT Motors C & I etc.

Our Strength



SI No.	Vehicle / Machine	Qty	Picture
01	10 Wheel Hywa	10	
02	12 Wheel Hywa	05	
03	14 Wheel Truck	03	
04	16 Wheel Truck	02	
05	18 Wheel Trailers	01	
06	22 Wheels Trailers	01	
07	Excavator with Rock Breaker	01	
08	Backhoe Loader (JCB)	02	
09	Hydra New Generation 15ton	01	
10	Mahindra - Camper	01	
11	Mahindra - Bolero	02	
12	Mahindra - Scorpio	02	
13	Toyota - Innova	02	

Policy & Management



It is the policy of NEXT INDIA to protect the health and safety of our employees, customers and the peripherals. Higher management shall ensure to align among the whole company globally. This Environmental, Health and Safety (EHS) policy of NEXT INDIA committed to:

- Create a workplace free from accidents, injuries and exposure to hazards, conserve natural resources and prevent pollution to protect the ecological balance.
- Use process of safety and management procedures like Safety Audits, health analysis and documentation of housekeeping and storage related information
- Prepare ourselves to address EHS emergencies.
- Continuous monitoring of objectives and targets to improve our EHS performance.
- Establish global standards for EHS that are technically and scientifically sound to protect human health, safety and above all the environment.
- Acquire genius for a better organizational structure to support achieving these objectives.
- Circulating the EHS values throughout the company.
- Review and report to the Management about EHS performance on a periodic basis to improvise the standards continuously.
- Health being the indispensable organ of any organization is to be given top priority and monitored strictly periodically.



Our Safety Culture at Workplace



- Our first & foremost target is maximum customer satisfaction with highest safety standards.
- Safety in our concern is way ahead of anything else.
- We give respect to all critical angles of safety proposed by any concern.
- There is no margin for error regarding safety in our organization.
- Obeying all safe rules 81. Norms introduced anywhere at any point of the Universe.

- We provide safety to all our fellow men.
- Regards to others views regarding safety.
- All workmen should come to site with a fresh mind.
- None is allowed to the site without proper PPEs which is provided by us time to time.
- Safety officer & the site representative will address all the workers everyday morning to discuss the safety views 81reviews.



- Tool box report has to be made at first.
- Job Safety Analysis is being done before taking up any jobs.
- No work can be done unless and until it is inspected by supervisory staff and declared conducive for safe execution.
- After having clearance from supervisor & department the work will be started with a five minute safety discussion.
- All other terms & conditions of safety of the client is accepted by us.

Our



Maintenance Strategy

We have a definite plan to implement the basic industrial maintenance i.e. predictive maintenance, Preventive maintenance, Corrective maintenance. Breakdown maintenance - overhauling.



- Continuous monitoring of the system in accordance with the operation team.
- Efficiency Measures as per the observation.
- Defect list of past 2 years.
- Renovations and corrective measures with global overview.
- Spare life period and preventive measures having technical sharing with OEM.
- Quality of Consumables and outsourced spares
- Quality of T&P and Machineries with ready to use test certificates.
- 100% utilization of technical skill.
- Checklist as per the design and standards.

- Addressing in field experts after corrective maintenance.
- Equipment performance overview.
- Minimization of power utilization
- Team Work lead by efficient Engineers having sufficient in field knowledge.
- Safety and precautionary measures from point to point observation
- Making approach for the SOS maintenance throughout the plant..

Equipment Performance Monitoring



- Waste Disposal / ash disposal / waste lubricant disposal/ metallic and nonmetallic Scrap disposal approaches to be modified.
- Reporting and filing of maintenance activities.
- Job Safety Analysis.
- SOP and SMP as per the drawing and design

Our

Work Details

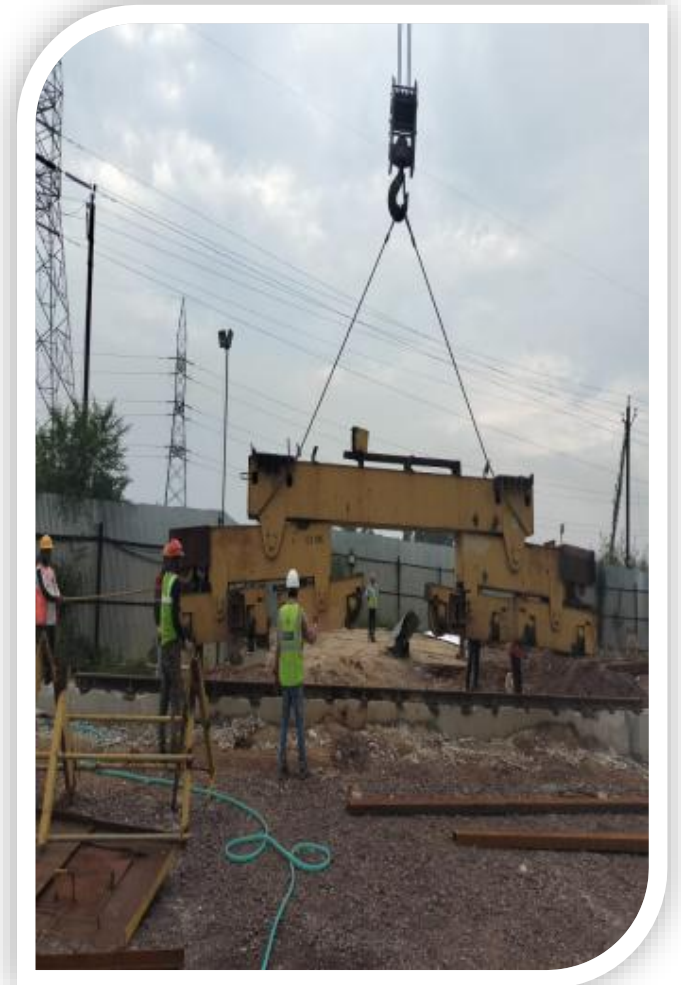
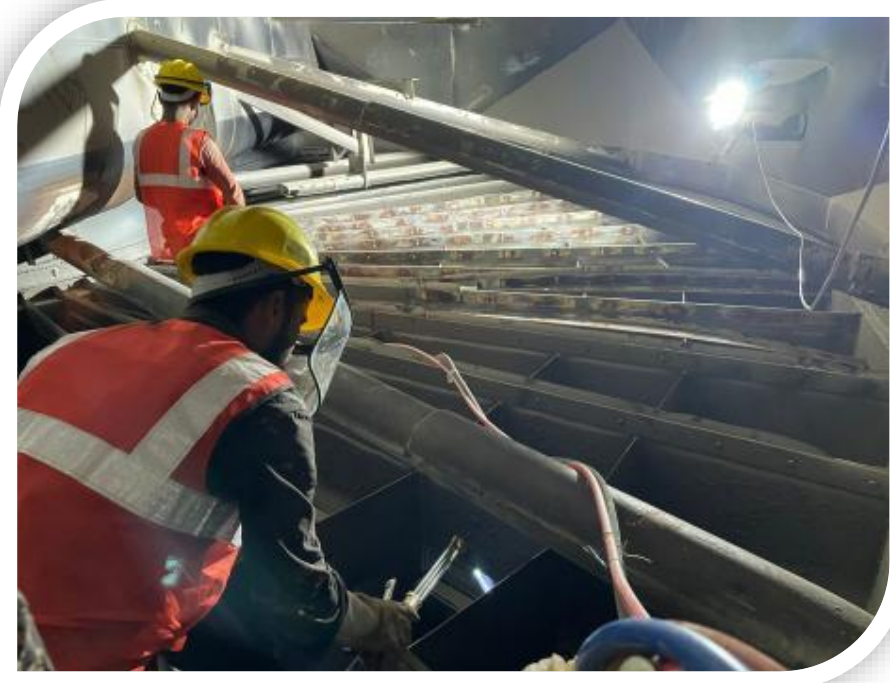
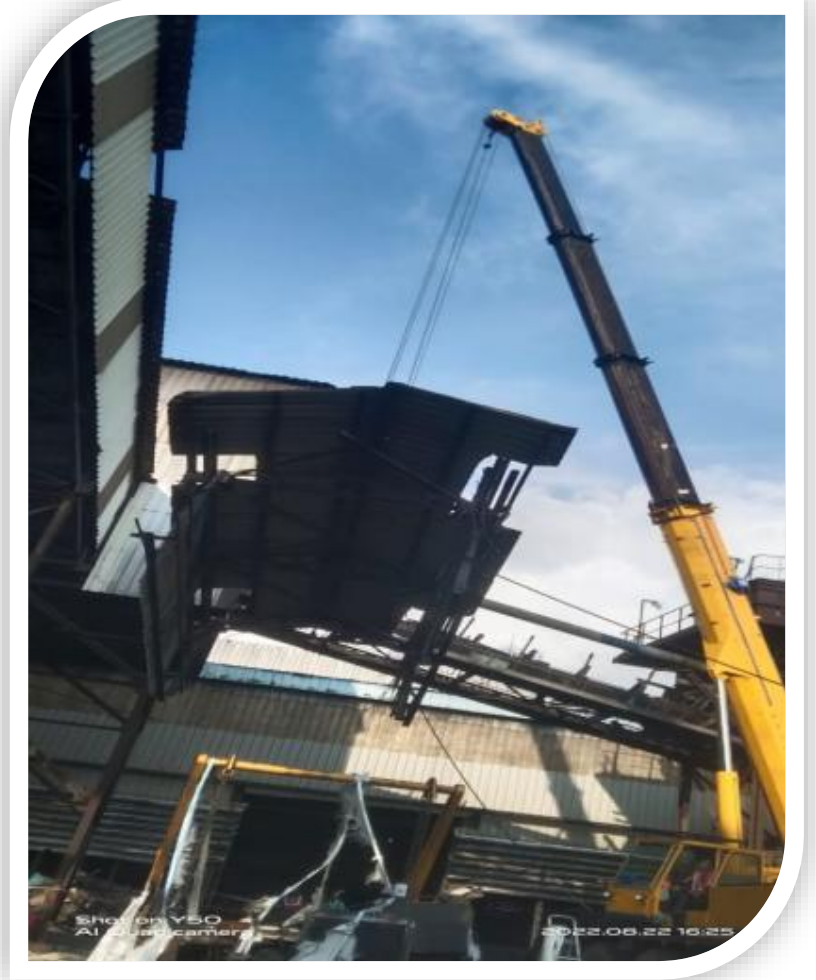
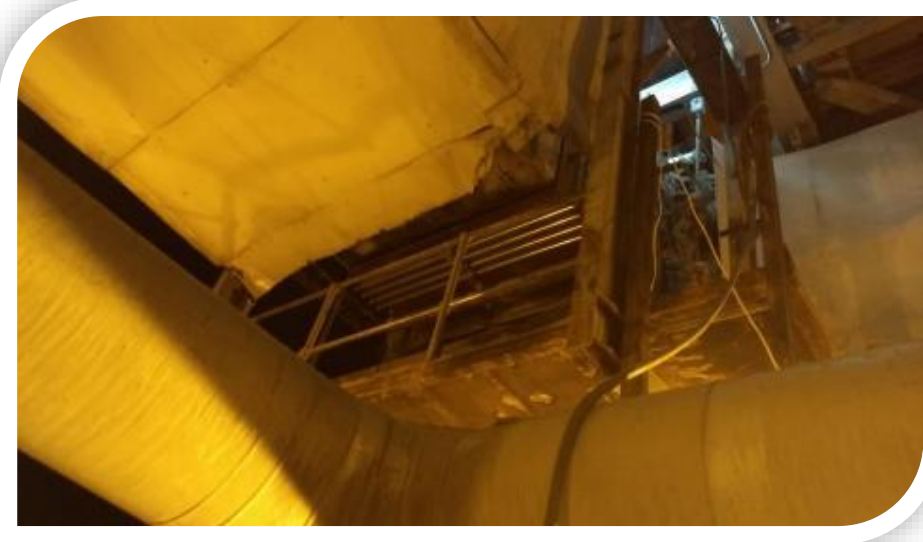


S. NO.	Location	Description	Customer	Status
1	Allapalli MAHARASHTRA	Lloyds Metals and Energy Ltd (LMEL), Surjagarh Iron Ore Mine (SIOM) Maharashtra. Iron-Ore Transportation to Siltara Raipur C.G.	M/s LMEL	On Going
2	Damanjodi ODISHA	NALCO Refinery Pipe line Fabrication / Erection & Commissioning	M/s Dee Vee Pvt. Ltd	On Going
3	Saraipali CHHATTISGARH	Material Transportation from Saraipali C.G to Panna Madhya Pradesh	M/s UEIPL	On Going
4	Raigarh CHHATTISGARH	AOH of 300MW Pressure part Maintenance, Coal burner maintenance, NDT, Valve Replacement & Hanger inspection & maintenance.	M/s SARDA Energy & Minerals Ltd.	Completed

Gallery



Gallery



Our Valuable Clients



सेल SAIL



vedanta
transforming for good



balco



LARSEN & TOUBRO



ESL STEEL LIMITED

R.K.M. Powergen

NGSL

NTPC and GE Joint Venture



ACB (INDIA) LIMITED



KEEC

FEEDBACK POWER
Quality O&M Delivered

steag

TRN Energy Pvt. Ltd

m buildcon



LLOYDS METALS



साउथ ईस्टर्न कोलफील्ड्स लिमिटेड
South Eastern Coalfields Limited

A Government of India Undertaking
A Miniratna Company

Contact Us



Shop No. 07 B, Vikas Complex
Power House Road, Korba
Chhattisgarh - 459677



Phone & Fax NO. - +91- 9755933507,
+91 97520 18888



Website-www.next-india.com
E-Mail ID - headoffice@next-india.com
nextindia26@gmail.com